

Features

- Lifting Height of up to 6.90 m
- Maximum capacity of 3,500 kg
- Clear View cab provides all round vision
- Audio-visual Load Stability indicator
- Mechanical Quick-switch coupler for efficient attachment changes
- Four-wheel steering - Front wheel, Co-ordinated and crab.
- Hydrostatic Transmission
- Four wheel drive
- 45% gradeability.

Performance

Maximum Lift Capacity

3,500 kg

Capacity at full height

2,600 kg

Maximum Forward Reach

3.90 m

Capacity at Maximum Forward Reach

1,350 kg

Lifting Height

6.90 m

Reach at Maximum Height

0.90 m

Break-out force with standard bucket

55 kN

Drawbar Pull (loaded)

5,000 kg

Carriage Rotation

143°

Standard Specifications

Engine

Tier III 74.9kW Deutz TCD 2012

102L Fuel Tank

10.4 L Engine Oil 15W40

17.5 L Coolant (radiator, hoses, engine)

Hydraulic System

Load Sensing Type 102 l/min

Reservoir

95.5 L

Transmission

Hydrostatic

Drive

4 x 4

Steering

4 WS/Front Steer/Crab Steer

Brakes

Wet multi disc

Accessories & Options

- Air-conditioning
- Work lights on Boom
- Front & Rear Cab work lights
- Rotating Beacon
- Prepared for Radio
- Hydraulic Quick-switch Coupler
- Auto Wheel Alignment
- Speedometer
- 12V Outlet
- Double Acting Rear Hydraulic Outlet
- Tow Hitch

Attachments

Pallet Forks and Carriages

Side-shift Carriage

Fork positioning Carriage

General Purpose Bucket

Digging Bucket

4-in-1 bucket

Truss Boom

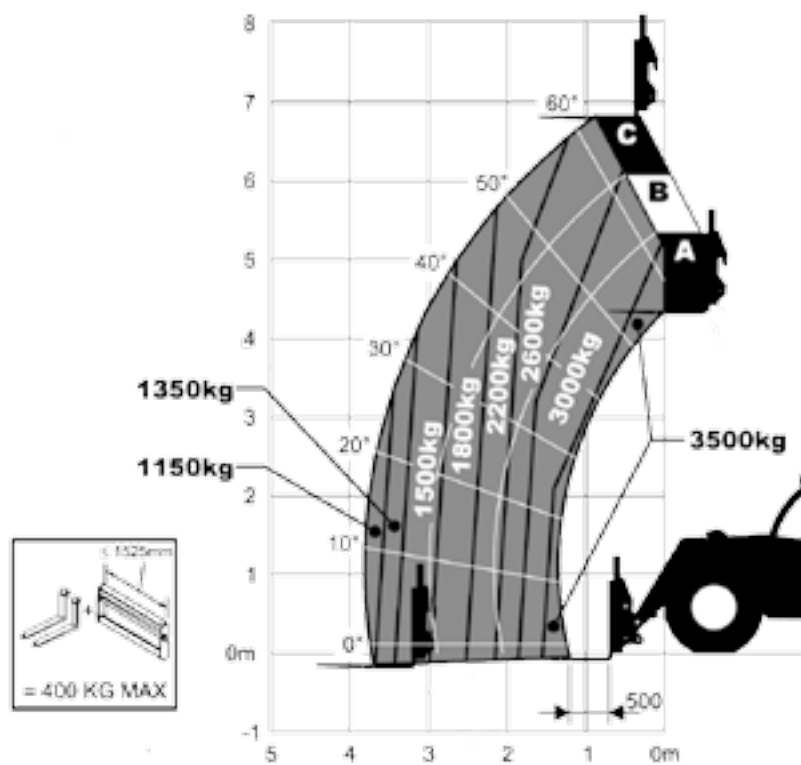
Bale Handler

Bale Forks (spike)



Dimensions

A. Overall Height.....	2.45 m
B. Overall Width	2.33 m
C. Width of Cab.....	0.89 m
D. Track width	1.89 m
E. Wheelbase	2.98 m
F. Length at front wheels	4.23 m
G. Length at fork-holder plate	5.02 m
H. Ground Clearance	0.46 m
Gross Vehicle Weight (closed cab CE version)	7,400 kg (with carriage)



JLG is continually researching and developing products and reserves the right to make modifications without prior notice. All data in this document is indicative. Certain options or country standards will increase weight. Specifications may change to meet country standards or with the addition of optional equipment.

JLG International
 Polaris Avenue 63
 2132 JH Hoofddorp
 The Netherlands
 Tel: +31 (0)23 565 5665
 Fax: +31 (0)23 557 2493
 e-mail address: europe@jlg.com
www.jlgeurope.com

Printed in Belgium
 FORM No.: DS3507H
 PART NO.: DS3507H-ENGLISH

